



CO kg 25000

OPZIONI A RICHIESTA :

- Approvazione ATEX  II 1 GD (zona 0-1-2-20-21-22).....
- KIT\_CO accessorio con due basi in acciaio inox .....
- PIA\_CO due piastre in acciaio speciale adatte unicamente per basi KIT\_CO .....

OPTIONS ON REQUEST :

- ATEX approved  II 1 GD (zone 0-1-2-20-21-22) .....
- KIT\_CO two stainless steel bases .....
- PIA\_CO two special steel plates suitable only for KIT\_CO bases.....

 APPROVAZIONE OIML R60 C4  
C4 OIML R60 C4 APPROVED

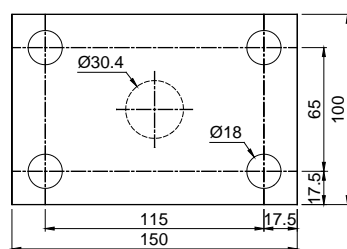
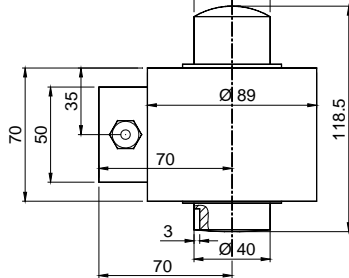


- ESECUZIONE IN ACCIAIO INOX 17-4 PH
- ERRORE COMBINATO  $\leq \pm 0,017 \%$
- GRADO DI PROTEZIONE IP 68
- PROTEZIONE ANTIFULMINE

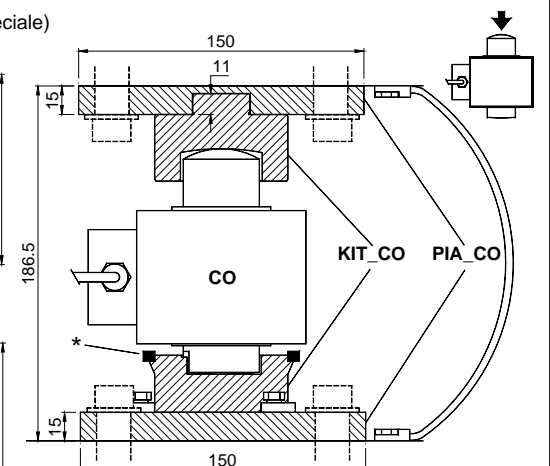
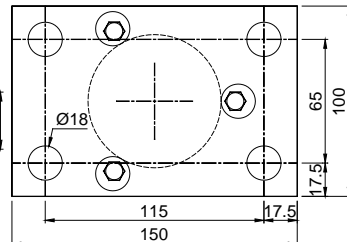
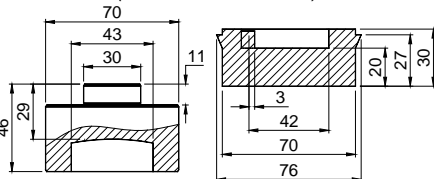
- 17-4 PH STAINLESS STEEL CONSTRUCTION
- COMBINED ERROR  $\leq \pm 0.017 \%$
- PROTECTION RATING IP 68
- LIGHTNING PROTECTION

Dimensions (mm)

PIA\_CO (piastre super. e infer. in acciaio speciale)  
(Special steel plates)



KIT\_CO (basi superiore e infer. in acciaio inox)  
(Stainless steel bases)



\* Sistema antirotazione  
(perno più O-ring)  
Pin and O-ring for antirotation

CO weight = 2.4kg  
KIT\_CO weight = 1.8kg  
PIA\_CO weight = 3.4kg

CARATTERISTICHE TECNICHE

TECHNICAL FEATURES

SENSIBILITA' 2 mV/V +/- 0.1%  
EFFETTO DELLA TEMPERATURA SULLO ZERO 0.002 % / °C  
EFFETTO DELLA TEMPERATURA SUL FONDO SCALA 0.002 % / °C  
COMPENSAZIONE TERMICA - 10°C / + 40°C  
CAMPO DI TEMPERATURA DI LAVORO - 30°C / + 65°C  
CREEP A CARICO NOMINALE DOPO 30 MINUTI 0.02 %  
TENSIONE DI ALIMENTAZIONE MAX TOLLERATA 15 Volt  
RESISTENZA D'INGRESSO 700 ohm +/- 7  
RESISTENZA DI USCITA 700 ohm +/- 7  
BILANCIAMENTO DI ZERO +/- 1 %  
RESISTENZA D'ISOLAMENTO > 5000 Mohm  
CARICO STATICO MASSIMO (% sul Fondo Scala) 150 %  
CARICO DI ROTTURA (% sul Fondo Scala) > 300 %  
DEFLESSIONE A CARICO NOMINALE 0.6 - 1 mm

2 mV/V +/- 0.1%  
0.002 % / °C  
0.002 % / °C  
- 10°C / + 40°C  
- 30°C / + 65°C  
0.02 %  
15 Volt  
700 ohm +/- 7  
700 ohm +/- 7  
+/- 1 %  
> 5000 Mohm  
150 %  
> 300 %  
0.6 - 1 mm

RATED OUTPUT  
TEMPERATURE EFFECT ON ZERO  
TEMPERATURE EFFECT ON SPAN  
COMPENSATED TEMPERATURE RANGE  
OPERATING TEMPERATURE RANGE  
CREEP AT NOMINAL LOAD AFTER 30 MINUTES  
MAX SUPPLY VOLTAGE WITHOUT DAMAGE  
INPUT RESISTANCE  
OUTPUT RESISTANCE  
ZERO BALANCE  
INSULATION RESISTANCE  
SAFE OVERLOAD (% of Full Scale)  
ULTIMATE OVERLOAD (% of Full Scale)  
DEFLECTION AT NOMINAL LOAD

CAVO CABLE

LUNGHEZZA 15 m LENGTH  
DIAMETRO 5 mm DIAMETER  
FILI CONDUTTORI 4 x 0.24 mm<sup>2</sup> CORES

