

# AT




## CELLE DI CARICO OFF-CENTER per piattaforme 1200 x 1200 mm SINGLE-POINT LOAD CELLS for platforms 1200 x 1200 mm

**AT kg 2000** .....

**OPZIONI A RICHIESTA :**

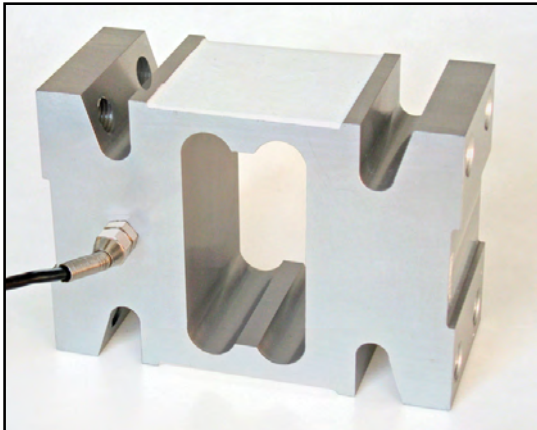
- Approvazione ATEX  II 1 G  II 2 D (zona 0-1-2-21-22)...
- Versione  R60 C3 (modello ATL) .....

**OPTIONS ON REQUEST :**

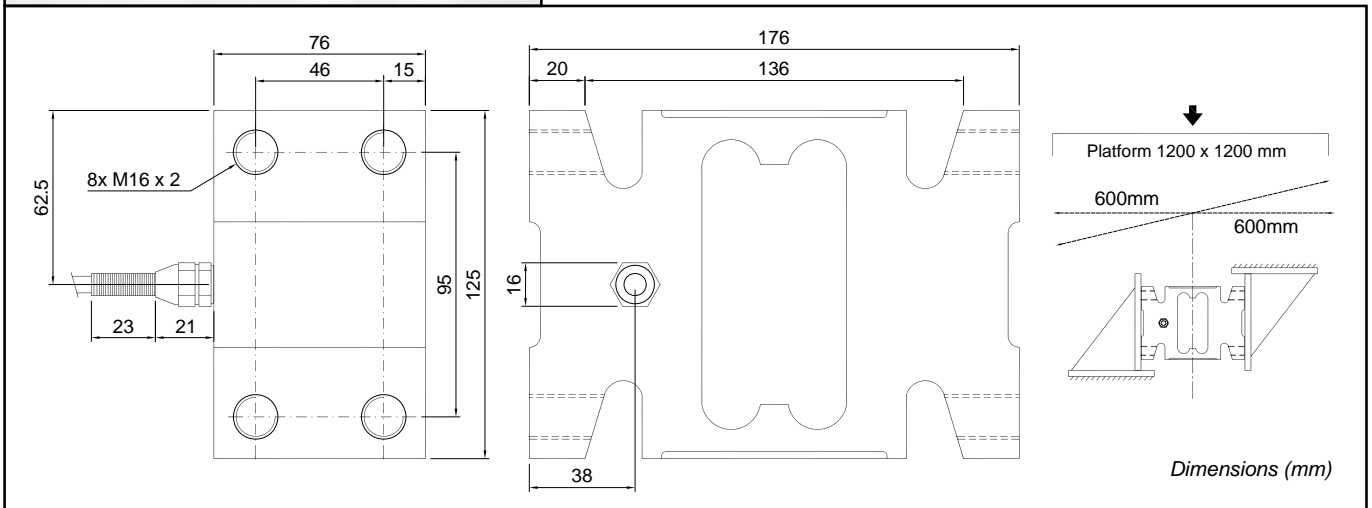
- ATEX approved  II 1 G  II 2 D (zone 0-1-2-21-22)...
-  R60 C3 sversion (mod. ATL) .....

**Realizzate in accordo alle norme OIML R60**

Manufactured according to OIML R60 standards



- ESECUZIONE IN LEGA DI ALLUMINIO
- ERRORE COMBINATO  $\leq \pm 0,03\%$
- GRADO DI PROTEZIONE IP 65
- ALLOY ALUMINUM LOAD CELL
- COMBINED ERROR  $\leq \pm 0.03\%$
- PROTECTION CLASS IP 65



### CARATTERISTICHE TECNICHE

SENSIBILITA' 2 mV/V +/-10%  
 EFFETTO DELLA TEMPERATURA SULLO ZERO 0.0025% °C  
 EFFETTO DELLA TEMPERATURA SUL FONDO SCALA 0.0025% °C  
 COMPENSAZIONE TERMICA - 10°C / + 40°C  
 CAMPO DI TEMPERATURA DI LAVORO - 20°C / + 60°C  
 CREEP A CARICO NOMINALE DOPO 30 MINUTI 0.03 %  
 TENSIONE DI ALIMENTAZIONE MAX TOLLERATA 15 Volt  
 RESISTENZA D'INGRESSO 410 ohm +/- 10  
 RESISTENZA DI USCITA 350 ohm +/- 3  
 BILANCIAMENTO DI ZERO +/- 2 %  
 RESISTENZA D'ISOLAMENTO >2000 Mohm  
 CARICO STATICO MASSIMO (% sul Fondo Scala) 120 %  
 CARICO DI ROTTURA (% sul Fondo Scala) > 200 %  
 DEFLESSIONE A CARICO NOMINALE 0.8 mm

### TECHNICAL FEATURES

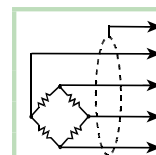
RATED OUTPUT  
 TEMPERATURE EFFECT ON ZERO  
 TEMPERATURE EFFECT ON SPAN  
 COMPENSATED TEMPERATURE RANGE  
 OPERATING TEMPERATURE RANGE  
 CREEP AT NOMINAL LOAD IN 30 MINUTES  
 MAX SUPPLY VOLTAGE WITHOUT DAMAGE  
 INPUT RESISTANCE  
 OUTPUT RESISTANCE  
 ZERO BALANCE  
 INSULATION RESISTANCE  
 SAFE OVERLOAD (% of Full Scale)  
 ULTIMATE OVERLOAD (% of Full Scale)  
 DEFLECTION AT NOMINAL LOAD

#### CAVO

LUNGHEZZA 3 m  
 DIAMETRO 5 mm  
 FILI CONDUTTORI 4 x 0.20 mm<sup>2</sup>

#### CABLE

LENGTH  
 DIAMETER  
 CORES



SCHERMO	SHIELD
+ SEGNALE (VERDE)	+ SIGNAL (GREEN)
+ ALIMENTAZIONE (ROSSO)	+ EXCITATION (RED)
- SEGNALE (BIANCO)	- SIGNAL (WHITE)
- ALIMENTAZIONE (NERO)	- EXCITATION (BLACK)