

IT1000



**Universal
Weighing Terminal,
W&M Approved,
for Industrial Use**

IT1000 - Universal Industrial Weighing Terminal

Stainless steel housing IP67

Suitable for harsh environment weighing locations. With mounting brackets for desk-top or wall-mount installation. Integrated power supply unit, sealed cable glands for all cable connections.



LCD display

with backlighting.

For indication of weight, multi-lingual operator prompts and calibration dialog.

Keyboard

With function keys for zero setting, taring, printing, totalizing and special functions.

Power supply

110 – 240VAC (integrated) for stationary use or 12 – 30VDC (integrated) for mobile use.

Universal Use

Suitable for difficult environmental conditions and locations with high hygienic standards, as in the food, pharmaceutical and chemical industry.

High Operational Security

Fast and error-free operation is ensured by a high-contrast alphanumeric LCD for the indication of weight, IDs and operator prompts in combination with an easy-to-use keyboard.

Weighing Electronics

IT1000 connects to one scale with up to 16 loadcells and provides a W&M approved resolution of up to 6000d with max. 80% preload. Calibration is possible as single or multiple-range (eg 3x3000d) and as single or multi-interval scale.

Weighing Program

Display of net, tare and gross weight. Operator prompting for capturing of weight or piece count. Totalizing is also possible. Plug-on modules are used to set IT1000 up for applications of varying complexity.

Data Logging

via optional printer interface. The print layout for labels or forms is configurable. Printout of weights, totals, date, time and consecutive-No.

Data Transmission To PC

via optional PC interface. Transmission of date, time, consecutive-No. and weight after each weighing cycle.

PC ONLINE Mode

via optional PC interface. Reading of weight, taring, zero setting and other functions can be remotely controlled from a PC. Weights can be stored in a W&M approved data archive on the PC's harddisk for verification. Data transmission is possible through serial interface or Ethernet LAN via EtherPort.

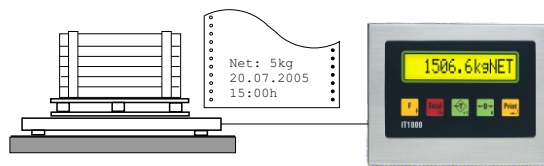
Switching And Filling

With an optional input/output module 3 weight thresholds can be monitored, eg for max. or min. values. Start of weighing cycle and taring is possible from external switches. Alternatively the inputs and outputs can be used for a filling sequence with start/stop/interrupt and two-speed cut-off.

IT1000 - Standard Programs

BASIC

W&M approved weighing terminal
Taring, weighing and totalizing,
printout of ticket.

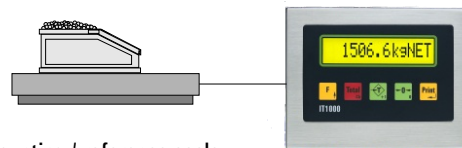


Desk-top or floor scale

Connection to:
printer, PC or
remote display

COUNT

Parts counting terminal
Weighing of reference parts and
calculation of average piece weight,
taring, weighing of unknown quantity,
display and printout of piece count.

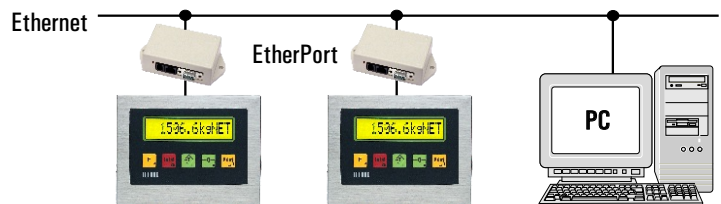


Counting / reference scale

Connection to:
printer or PC

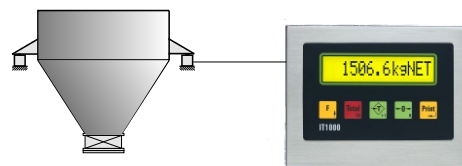
ONLINE

W&M approved ONLINE weighing terminal
Transmission of weights on request from PC,
via serial interface or Ethernet, storage of
weights possible in approved data archive
on PC harddisk.



IT1000

Weighing terminal with setpoints
Min. / max. weight monitoring for silo scales,
output signals for: 'weight under min.'
and 'weight over max.'

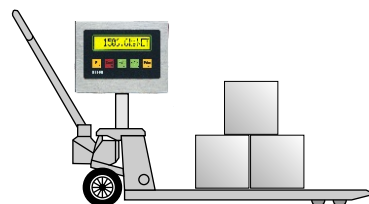


Hopper scale

Connection to:
relay unit or PLC

IT1000

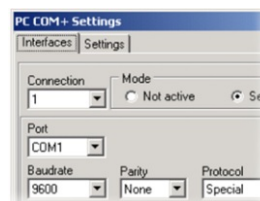
Mobile weighing
With data logging
(IT1000 power supply 12 – 30VDC).



Connection to:
printer

PC COM+

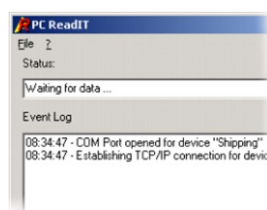
PC Software Tool PC COM+ (Option)
ActiveX component for the communication
between Windows programs and IT1000
terminals in ONLINE mode. In combination with
PC ARCHIVE option to store weights on PC
harddisk in an approved data archive.



Runs under:
Windows XP
Windows Vista
Windows 7/8

PC ReadIT

PC Software Tool PC ReadIT (Option)
Reception of weighing data and storage
in an ASCII file (*.txt) or database.
Supported databases: MS SQL, MS ACCESS,
Oracle, Interbase SQL or ODBC.



Runs under:
Windows XP
Windows Vista
Windows 7/8

IT1000 - Technical Data

Construction

Compact stainless steel housing protected to IP67, for desk-top, wall-mount and column-mount installation or as panel-mount version, suitable for harsh environments, all cable connections through sealed cable glands.

Display and keyboard

13-character alphanumeric back-lit LCD, height of characters 14mm, for indication of weight and operator prompts and calibration.

Sealed membrane keyboard with tactile feedback, with 5 keys for zero setting, taring, printing, totalizing and special functions.

Weighing electronics

Integrated signal amplifier for the connection of up to 16 strain gauge loadcells, W&M approved resolution of up to 6000d at 80% preload. Internal resolution 524,000d, 50 updates per second, smallest loadcell signal 0.33µV/e.

Calibration

Setup as single or multiple range scale with 1, 2 or 3 ranges or as multi-interval scale. Calibration with test weights or through entry of rated output of loadcell(s), option for the linearization of the load curve. Clear operator prompts for all steps of calibration sequence.

Electrical connection

110(-15%) to 240(+10%)VAC, 50/60Hz via integrated power supply, option: 12 – 30VDC, alternatively: battery version with integrated lithium-ion battery, operating time 30h, power consumption max. 7.5VA.

Operating temperature

- 10°C to + 40°C, 95% relative humidity, non-condensing.

Interfaces

Socket for one of the following interface options:

PC interface selectable RS232, 20mA CL, RS422 or RS485, configurable as data transmission after each weighing cycle or in request mode.

Printer interface selectable RS232, 20mA CL or RS485, for the connection of a form or ticket printer, printout configurable via display and keyboard.

Interface for remote display selectable RS232, 20mA CL or RS485, several protocols configurable.

2 digital inputs and 2 digital outputs, optoisolated, 24VDC, outputs for setpoint monitoring or simple filling applications, inputs for start of weighing and taring or start/stop of filling.

1 digital input and 3 digital outputs, optoisolated, 24VDC, outputs for +/- check or setpoint monitoring.

Analog output

0-20mA, 4-20mA, 0-10V or 2-10V, 15Bit, 32,000 divisions, for analog output of weight.

Options

Realtime clock for display, printout and data transmission of date and time.

PC Software Tool PC COM+ | PC ARCHIVE recording of weighing data on PC's harddisk, providing long-time storage.

PC Software Tool PC ReadIT for the reception of weighing data and storage in an ASCII file or database.

Ethernet connection via external EtherPort gateway.

Splash and dust cover transparent plastic cover to protect display and keyboard.

Battery charger

Ex version

with ATEX approval for installation in hazardous area, zone 2 (gas) or zone 22 (dust) available as option.

Construction:

Desk-top or wall-mount installation



- Stainless steel housing, IP67
- Desk-top installation
- Dimensions WxHxD: 168x167x115mm



- Stainless steel housing, IP67
- Wall-mount installation
- Dimensions WxHxD: 168x151x111mm

Panel-mount version



- Stainless steel housing, fascia plate protected to IP65
- Panel-mount installation
- Dimensions WxHxD: 182x145x47mm
- Cut-out in panel: 165x129mm

Directives: 2009/23/EC, 2004/108/EC, 2006/95/EC



EC approval as non-automatic weighing instrument

Standards: EN 45501, OIML R76-1, EN 61000-6-2, EN 61000-6-3, NAMUR NE21, EN 60950



NTEP approval as non-automatic weighing instrument



ETL certified in accordance with UL 60950-1 and CSA C22.2 No. 60950-1



EMI compliance with FCC Part 15



Mesures Canada: Approval as non-automatic weighing instrument



Russia: Approval as non-automatic weighing instrument



Ukraine: Approval as non-automatic weighing instrument

SysTec Systemtechnik und Industrieautomation GmbH
Tel. +49 (0) 2238 - 9663-0 - www.systecnet.com

Sales and service

Subject to change without notice

ST.2309.0729 IT1000_DBE.PDF 11.2012