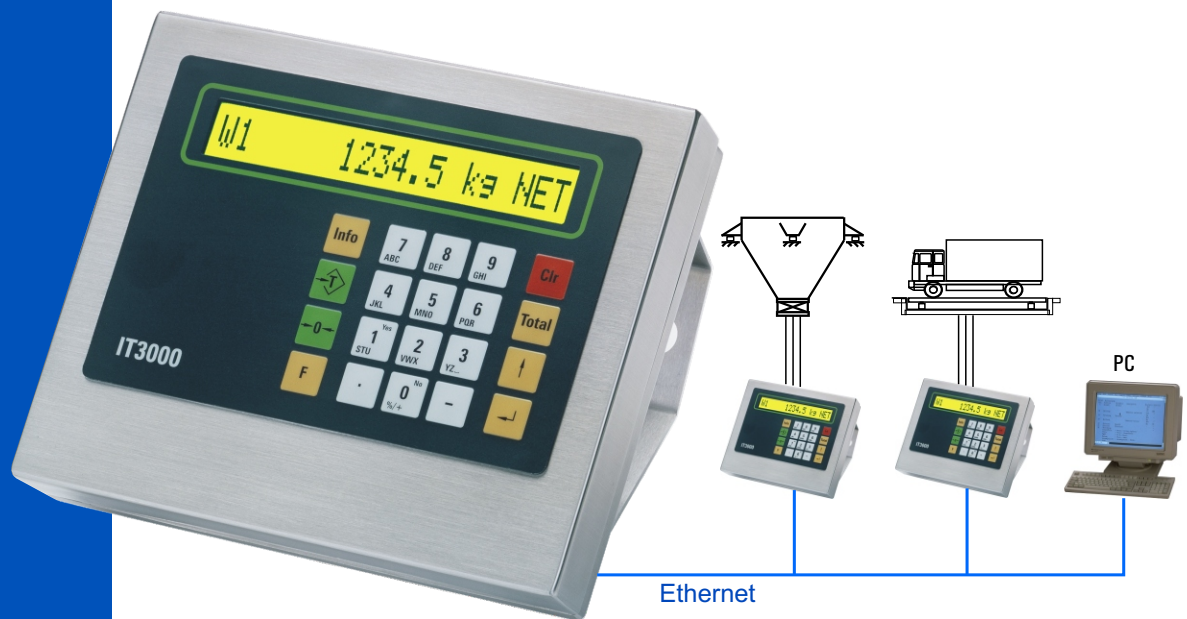


IT3000E

W&M Approved Industrial Weighing Terminal with Integrated Ethernet Interface and Web Server



IT3000E is a universal industrial weighing terminal ready for the integration in Ethernet networks. It includes the well proven configurable standard programs:

- **BASIC** for simple weighing systems
- **COUNT** for parts counting
- **CHECK** for simple check scales
- **FILL** for simple filling systems
- **ONLINE** for remote controlled systems
- **TRUCK/ONLINE** for truck scale systems with online PC connection

Parameters can be edited via PC with the **IT3000 Configurator** PC tool or by means of a web browser **directly over the network**.

After each weighing cycle **weight, date/time** and the entered IDs can be stored via Ethernet in a file on a PC's **harddisk**. This does not require any specific PC program.

In **ONLINE Mode** the **IT3000E** can be remotely controlled from the PC via the Ethernet interface. The instruction set permits capturing of weight, taring, zero setting and dialog functions.

Any error condition, such as overload, along with date and time is recorded in a **log file** that can be viewed via web browser.

Storage of data in an internal W&M approved data archive or in a W&M approved file on the PC's harddisk.

IT3000E - Weighing Terminal with Ethernet Interface

Operation

Operator prompting via 20-character back-lit alphanumeric display. Data entry via sealed membrane keyboard with numeric and function keys.

Weighing electronics

- Integrated signal amplifier for connection of up to 8 strain gauge loadcells using 4- or 6-wire technology
- Calibration as single or multiple-range and as single or multi-interval scale
- Weights and Measures approved resolution of 6000d with a maximum preload of 80%, 524,000d internal resolution
- 50 filtered updates / sec
- Calibration is made either via display and keyboard of the IT3000E or over the Ethernet interface.

Ethernet interface

- Integrated Ethernet interface, with selectable IP address for 10/100BASE-T networks, RJ45 connector
- Configuration with PC program 'EtherPort Tool' over the network.

Security

- Data is retained in the event of power loss
- Password protection.

Interfaces

One optional serial interface (RS232, RS485 or 20mA CL passive) to connect a printer, remote display or reference scale.

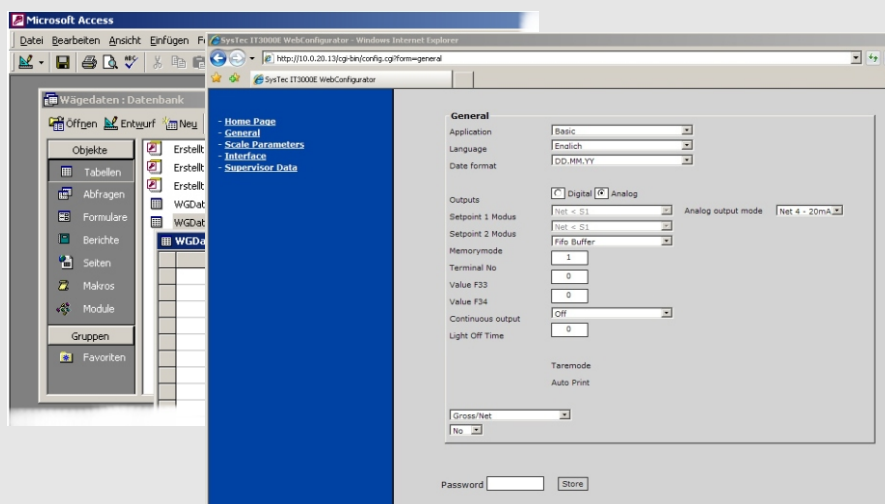
Digital inputs and outputs

Optional PIM module with 2 digital 24V inputs and 2 digital 24V outputs.

Operating temperature

-10°C to +40°C, 95% relative humidity, non-condensing.

Integrated configuration program for setup and maintenance via a web browser



Access to weighing data from Office applications (MS-Access, MS-Excel) without additional software.

Electrical connection

110 (-15%) – 240 (+10%) VAC, wide range input, 50/60 Hz, power consumption max. 15 VA; Option: 12 – 30 VDC.

Ex version

with ATEX approval for installation in hazardous area, zone 2 (gas) or zone 22 (dust) available as option

Options / accessories

- Ethernet connecting cable
- Protective dust and splash cover
- PC program PC *COM+* as communication object for online operation
- PC program PC *ARCHIVE* for the W&M approved storage of weighing data on PC harddisk.

Construction:

Desk / wall version



- Stainless steel housing, IP67
- Suitable for desk-top or wall-mount installation
- Dimensions WxHxD: 225x190x145mm

Panel-mount version



- Stainless steel housing, fascia plate protected to IP65
- Panel-mount installation
- Dimensions WxHxD: 216x156x61mm
- Cut-out in panel: 199x139mm

Directives: 2009/23/EC, 2004/108/EC, 2006/95/EC, 2004/22/EC



EC-approval as non-automatic weighing instrument

Standards: EN 45501, OIML R76-1, EN 61000-6-2, EN 61000-6-3, NAMUR NE21, EN 60950



NTEP-approval as non-automatic weighing instrument



ETL-certified in accordance with UL 60950-1 and CSA C22.2 No. 60950-1



EMI compliance with FCC Part 15



Mesures Canada: Approval as non-automatic weighing instrument



Russia: Approval as non-automatic weighing instrument



Ukraine: Approval as non-automatic weighing instrument

SysTec Systemtechnik und Industrieautomation GmbH
Tel. +49 (0) 2238 - 9663-0 - www.systemecnet.com

Sales and service

Subject to change without notice

ST.2309.0582 IT3000E_DBE.PDF 08.2011